

PACK 1 - REMOTE EMERGENCY 20W - 60W

MODEL NUMBER

PACK 1 - REMOTE EMERGENCY 20W-60W

SPECIFICATIONS

- For use on a range of LED fittings to convert them from standard to emergency fitting.
- Lithium iron phosphate battery.
- Accessory: test switch and charge indicator.
- LED fitting would be maintained emergency fitting if standard (main powered) driver, emergency lighting kit and battery are all retained in the circuit. LED fitting would be non-maintained emergency fitting if only emergency conversion module and battery are retained in the circuit.
- Deep discharge protection.
- Connector between emergency kit and battery has the function of polarity reversal protection.
- Ambient range ta 0....50°
- IP20 protection, relies on end-product enclosure for protection against accidental contact live parts.
- Not intended for use in luminaries for high-risk task area lighting.

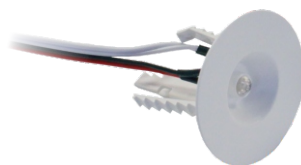
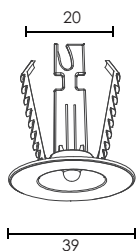
TECHNICAL DATA

- Input rated voltage: 220-240V AC, 50-60Hz
- AC input current: 50mA max
- AC Input power rated 4.0 W max
- Power factor: >0.5
- Charge time : 16 hours
- Charge mode: trickle re-charging on battery.
- Output emergency power 2,8 wattage DC10...50V (3-15 LEDs) constant power output.
- Output voltage DC10...50V, DC55V max(SELV)
- Battery capacity (LiFePO4) 1500mAh, 2200mAh
- Battery Charging Current: 0-250mA
- 1, 1.5, 2, 3 hours rated duration
- Max. casing temperature tc 70°
- Lumen Factor: 120lm/Wattage
- Reinforced insulation between main supply and the battery circuit.
- This unit can recharge the battery normally after reconnecting of battery.

LED INDICATOR HOLDER

HOLE CUT OUT

 20mm Ø.

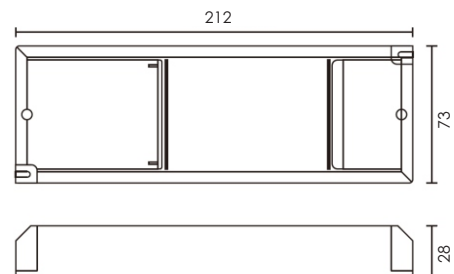


IP
20





DIMENSIONS IN MM

L212xW73xH28



LED INDICATOR

	Green stable: battery charging and fully charged
	Green off, DC mode (battery operation, emergency mode)

