

MIRA

MODEL NUMBER

MIRA

SPECIFICATIONS

HOUSING : 2mm 304 Stainless steel

LIGHT SOURCE : The fitting is designed to operate a 2W LED.

FINISH : Powder coated.

MOUNTING : Recessed luminaire designed for solid wall installation.

ACCESSORIES : Galvanised steel mounting box. This must be installed flush with the plaster finish.

CONTROL GEAR : The electronic supply is suitable for operation with 220 – 240 volts - 50 hertz single phase.

FASTENERS : All external screws are stainless steel.

INGRESS PROTECTION : IP20.

APPLICATION : Suitable for indoor use only.

OPERATING TEMPERATURE : (T_a) - 20° C to +25° C.

WEIGHT : 0.587 Kg including control gear.



Installation instructions available on the website or on request.

COLOURS

	Black (B)		Matt Silver (M)
	White (W)		Charcoal Grey (C)

APPLICATION AREAS

Indoor application.
Stair lighting.
Passage lights.

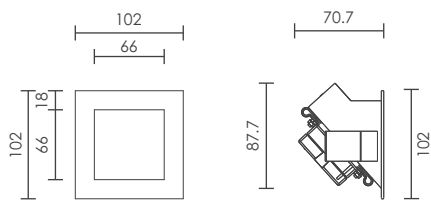


LIGHT SOURCE

LED Samsung LH561B+

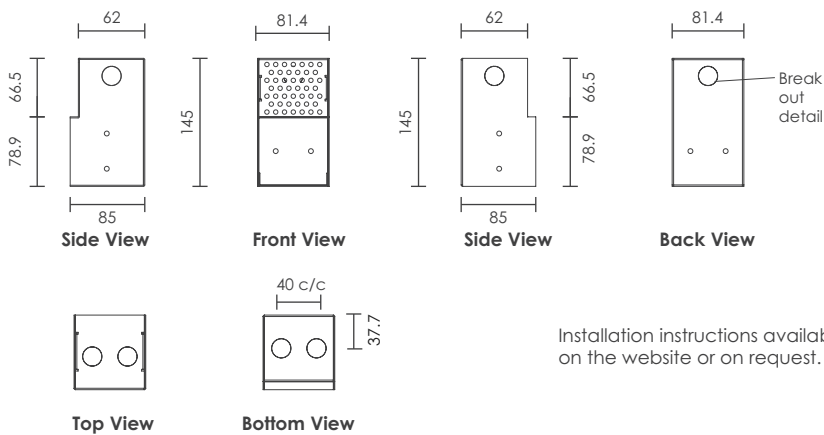
LED CURRENT (mA)	SYSTEM WATTAGE (W)	COLOUR TEMP (K)	NOMINAL FLUX (lm)
350mA	2W	4000K	197 lm
		3000K	185 lm

DIMENSIONS IN MM



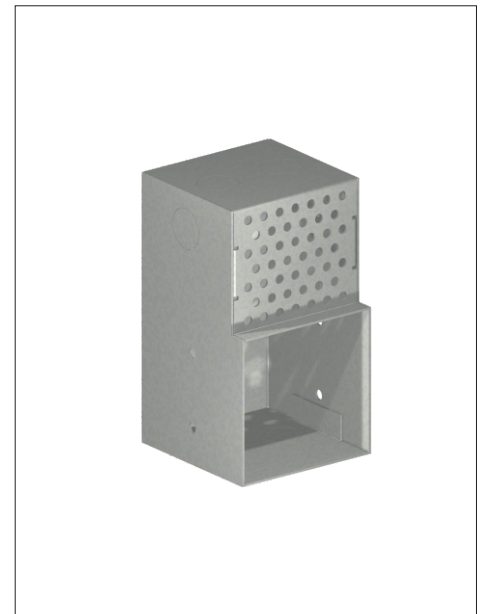
Mira Front View

Mira Side View



Galvanised Steel Box

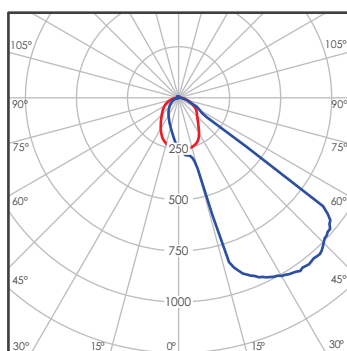
Installation instructions available on the website or on request.



Galvanised steel box for installation

LIGHT DISTRIBUTION

LED 2W



cd/klm
 — C0 - C180 — C90 - C270

