

# LINEAR 17x15

## MODEL NUMBER

LINEAR 17x15

## SPECIFICATIONS

**HOUSING** : Extruded aluminium.

**LIGHT SOURCE** : The fitting is designed to operate a LED up to 24W/m.

**DIFFUSER** : PMMA - polymethyl methacrylate - Opal matt, clear or PC diffused.

**MOUNTING** : Surface mounted.

**ACCESSORIES** : End Cap and Mounting clip.

**CONTROL GEAR** : Remote power supply. The electronic power supply is suitable for operation with a 220 - 240 volts. 50 hertz single phase. Dimming available on request.

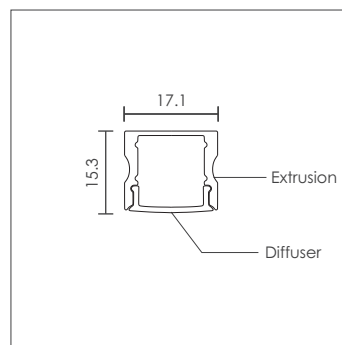
**INGRESS PROTECTION** : IP20.

**APPLICATION** : Suitable for indoor use.

Operating Temperature (Ta) - 20° C to +50° C.

**FEATURES** : Standard lengths 2m or 2.5m

**NOTE** : Provision must be made for Control gear as it is remotely mounted. Ceiling details need to be supplied to design for the layout.

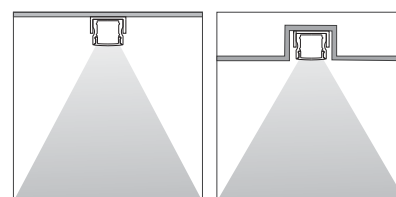


Section View

## APPLICATION AREAS

Indoor application.  
Signage.  
Architectural lighting.  
Bulkhead lighting.  
Shop fitting.  
Cove Lighting.  
Display case lighting.

## MOUNTING OPTIONS



K - Surface

R - Recessed

**LIGHT SOURCE**

**LED TAPE 24V**

NOMINAL WATTAGE (W/m)	NUMBER OF LED/m	COLOUR TEMP (K)	NOMINAL FLUX (lm/m)	LED GAP (mm)	CUT LENGTH (mm)
6.5W/m	42 LED/m	4000K	980 lm/m	23.81mm	166mm
		3000K	911 lm/m		
9.6W/m	80 LED/m	4000K	1723lm/m	10mm	100mm
		3000K	1608 lm/m		

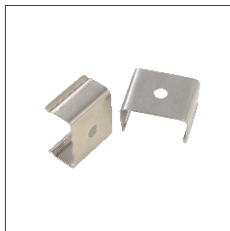
**LED - RL18 BOARD | CRI80 | 4000 Kelvin**

NO. LED's	CONTINUOUS	
LENGTH	Per Metre - nearest 100mm	
116mA / LED	NOMINAL WATTAGE(W/m)	NOMINAL FLUX (lm/m)
700mA	24W/m	3420 lm/m

**ACCESSORIES**



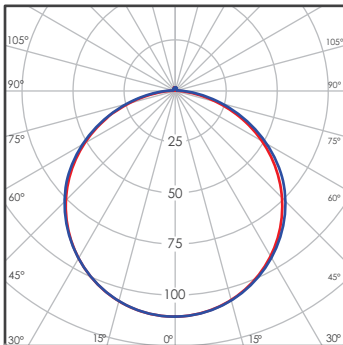
End Cap



Mounting Clips

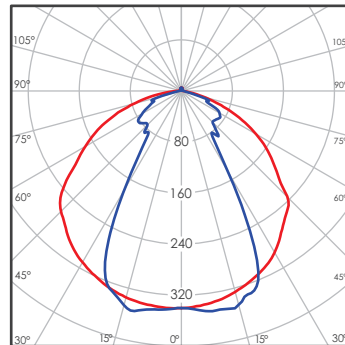
**LIGHT DISTRIBUTION**

LED 15.5W 600mm Opal matt



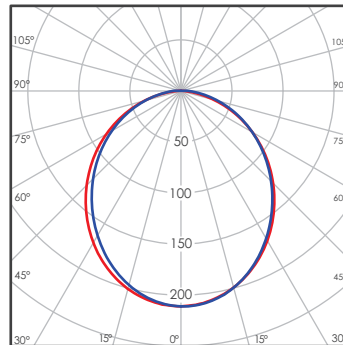
cd/klm  
— C0 - C180    — C90 - C270

LED 15.5W 600mm Clear



cd/klm  
— C0 - C180    — C90 - C270

LED 15.5W 600mm PC diffused



cd/klm  
— C0 - C180    — C90 - C270