

ALL CONNECTIONS TO BE CARRIED OUT BY A QUALIFIED ELECTRICIAN  
PLEASE READ CAREFULLY BEFORE STARTING INSTALLATION.



## ! WARNING

Electronic/Magnetic Control Device

### ELECTRIC SHOCK HAZARD

This equipment is to be serviced by trained personnel only.

## Karma

Save These Instructions for Future Reference

Electrical products can cause death, injury, or damage to property. Installation of this product must be carried out by a qualified electrician, in compliance with SANS 10142 or corresponding regulations of the country of installation. On completion of installation, the Certificate of Compliance must be updated.

**WARNING:** TO AVOID FIRE, SHOCK OR DEATH  
**TURN OFF POWER** AT CIRCUIT BREAKER OR FUSE AND TEST THAT THE POWER IS OFF BEFORE WIRING

ALL LUMINAIRES SUPPLIED AND TO BE INSTALLED ABOVE AND BELOW 5 METERS ARE IN COMPLIANCE WITH SANS 60598 SECTION 3.5.6 ACCORDING TO THE MANUFACTURER GUARANTEE AND WARRANTY

Regent Lighting reserves the right to change specifications modify designs and discontinue items without incurring obligation and whilst every effort is made to ensure that descriptions, specifications and other information in this catalogue are correct, no warranty is given in respect thereof and the company shall not be liable for any error therein.

## INSTALLATION INSTRUCTIONS

PLEASE READ CAREFULLY BEFORE STARTING INSTALLATION.  
ALL CONNECTIONS TO BE CARRIED OUT BY A QUALIFIED ELECTRICIAN



## ! WARNING

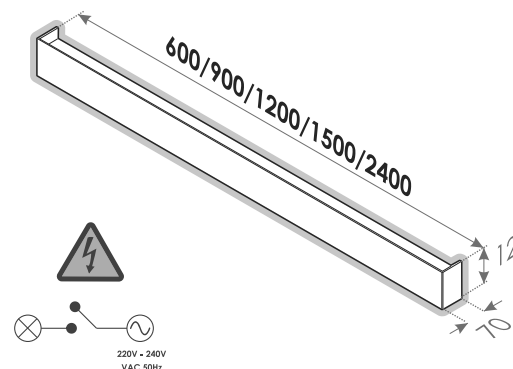
Electronic Control Device

### ELECTRIC SHOCK HAZARD

This equipment is to be serviced by trained personnel only.

## DO NOT CONNECT THE FITTING LIVE

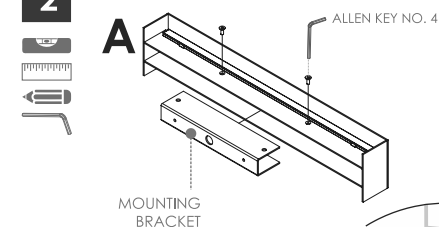
1



- BE SURE THE ELECTRICITY TO THE SYSTEM YOU ARE WORKING ON IS **ISOLATED**.
- **SWITCH OFF POWER SUPPLY**. IF THE MAIN SUPPLY POWER (LIVE) IS ON, IT WILL CAUSE DAMAGE TO THE LUMINAIRE.
- ENSURE THAT THE MAIN SUPPLY POWER IS PROTECTED WITH A **SURGE ARRESTOR**.

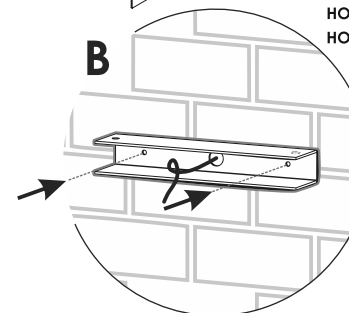
1. Confirm position of accent light before starting installation & ensure that power is run from the main power line to the desired position with enough cable slack to feed to the driver compartment in the fitting.

2



- A.** Unscrew M5 countersink screws on the fitting and remove the mounting bracket.
- B.** Use the mounting bracket as template to mark the two mounting holes on the selected surface. Center main power input from wall at the largest middle hole.

**ENSURE THE MOUNTING BRACKET IS LEVEL HORIZONTALLY BEFORE MARKING AND DRILLING THE HOLES.**



www.regentlight.co.za

REGENT LIGHTING A DIVISION  
OF WAHL INDUSTRIES.

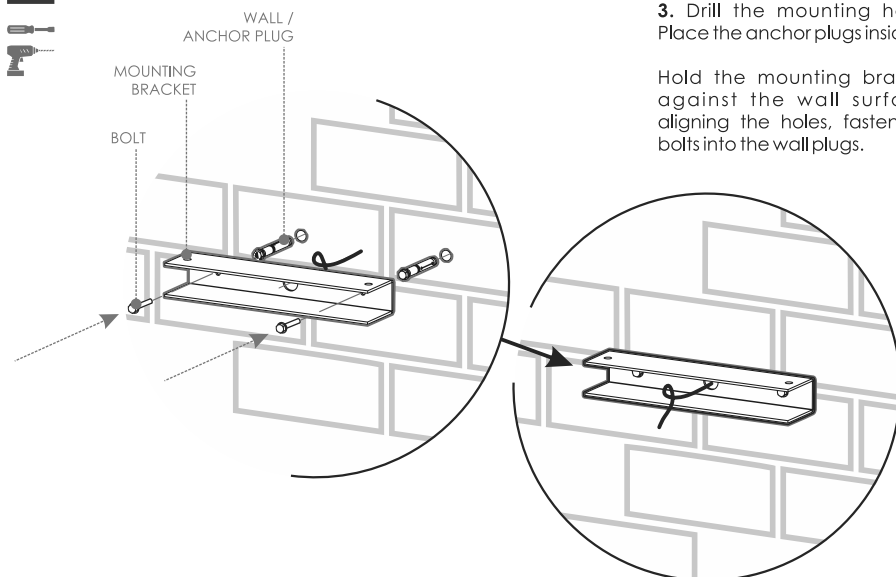
3 - 13 MAIN REEF SERVICE ROAD, CORNER  
SPRINGBOK AND MAIN REEF ROAD, INDUSTRIAL,  
JOHANNESBURG, SOUTH AFRICA.  
TEL : +27 11 474 0171



## Important Safety Instructions

This product should be installed by a competent person i.e. Qualified electrician.  
This product requires a constant stable electrical supply 220V - 240V VAC 50Hz - alternating current.  
The product must be regularly maintained, including the replacement of lamps/LED timeously.  
This product could be HAZARDOUS if not used correctly, it could cause electric shock, serious bodily harm or death.  
This product is not a toy, please keep away from children.  
This product may contain small parts that can be swallowed.

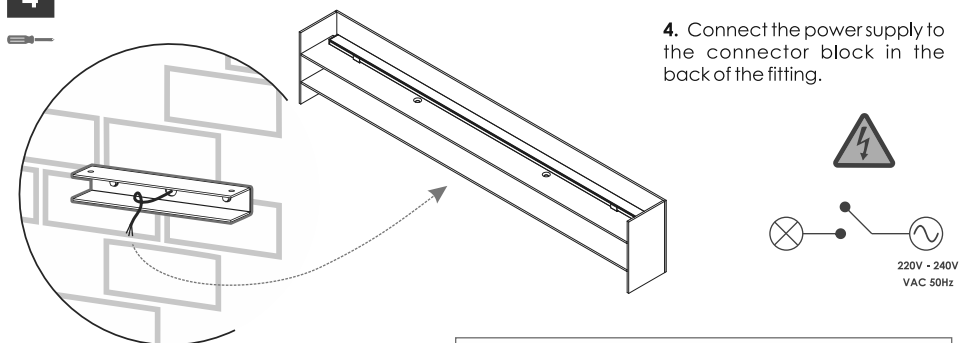
3



3. Drill the mounting holes.  
Place the anchor plugs inside.

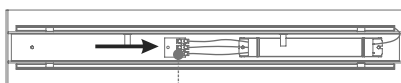
Hold the mounting bracket  
against the wall surface,  
aligning the holes, fasten the  
bolts into the wall plugs.

4



4. Connect the power supply to  
the connector block in the  
back of the fitting.

LUMINAIRE



CONNECTOR  
BLOCK

220V - 240V VAC 50Hz

MAIN ELECTRICAL  
SUPPLY → LUMINAIRE

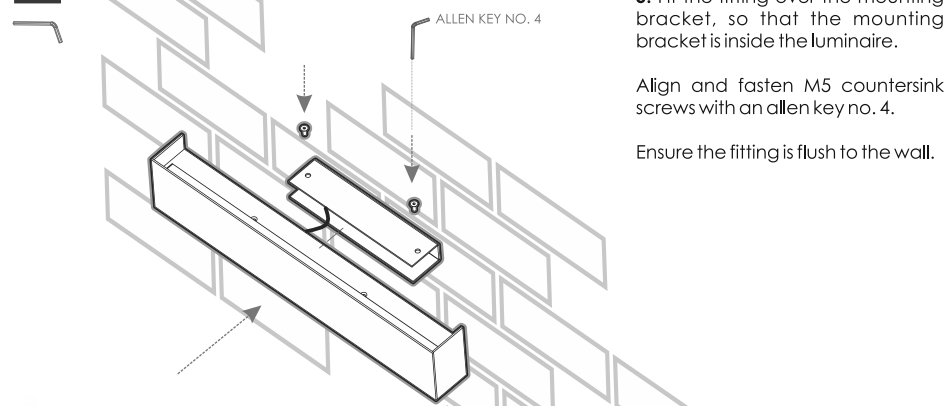
SWITCHED LIVE	Red/Brown →	⊕ L ⊕	Red/Brown
NEUTRAL	Green/Yellow →	⊕ E ⊕	Green/Yellow
EARTH	Black/Blue →	⊕ N ⊕	Black/Blue



## Important Safety Instructions

Use only the correct light bulbs/LED as stipulated on the carton for the product.  
Any modifications of this product after supply will result in the guarantee being void.  
Spare parts may become unavailable over time. Items can vary slightly from the picture on the carton.  
Coastal humidity can affect the longevity of the light fitting over time.  
Be sure to follow the steps in the order given.  
Read instructions carefully.

5

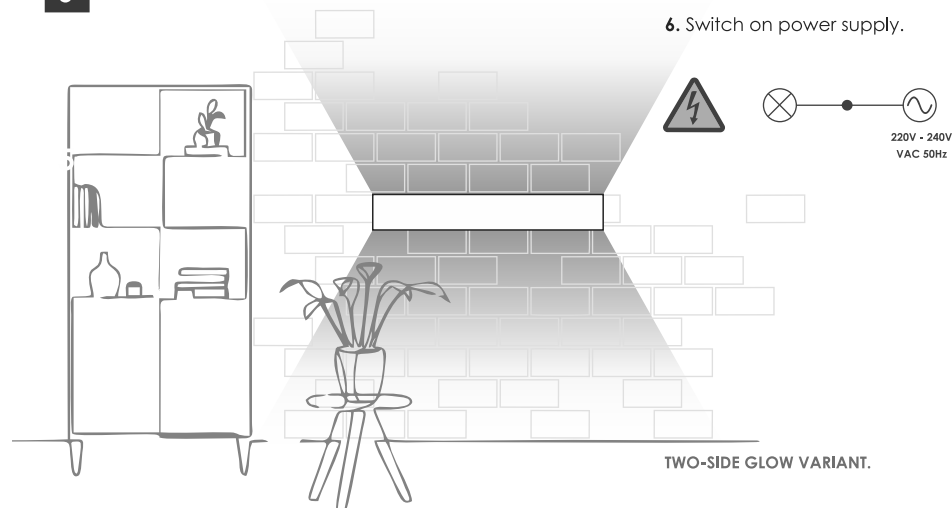


5. Fit the fitting over the mounting  
bracket, so that the mounting  
bracket is inside the luminaire.

Align and fasten M5 countersink  
screws with an allen key no. 4.

Ensure the fitting is flush to the wall.

6

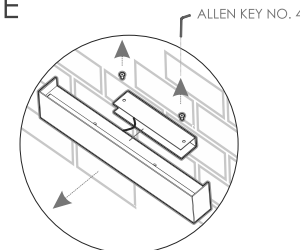


6. Switch on power supply.

220V - 240V  
VAC 50Hz

TWO-SIDE GLOW VARIANT.

## MAINTENANCE



Before opening the fitting, **check the surge arrestor** on the main power feed. If the light on the surge arrestor is off, the surge arrestor has blown and needs to be replaced.

To access the driver, open the fitting by loosening the M5 countersunk screws.