

INTEGRATED RECESSED PIR OCCUPANCY SENSOR 8m

MODEL NUMBER

STLP011

SPECIFICATIONS

The STLP011 is an integrated recessed mount, 360°, Passive Infrared occupancy sensor. PIR sensors detect changes in temperature within the detection area. Each sensor has a unique detection pattern created by the Fresnel lens. The IP integrity as well as improved UV resistance makes this sensor ideal for external applications.

TECHNICAL DATA

DESCRIPTION - Integrated Recessed PIR Occupancy Sensor

SUPPLY VOLTAGE - 230V +/-10%

FREQUENCY - 50Hz

OUTPUT LOAD - 1 fitting

DELAY TIME - 15min

LUX CONTROL - No

IP RATING - IP65

ANGLE OF DETECTION - 360°

MOUNTING HEIGHT - 2.8 - 7m

RECOMMENDED MOUNTING HEIGHT - 5m

DETECTION AREA - 8m

AVAILABLE IN - On/Off; DALI; DSI; 1-10V

SETTINGS VIA - Handheld remote

REMOTE - No

FUNCTIONS - Switching; RJ11 plug

OPERATING TEMPERATURE - -10 - 40°C

APPLICATION - Outdoor; luminaire integrated. Amenity lighting; security; parking lot; courtyard

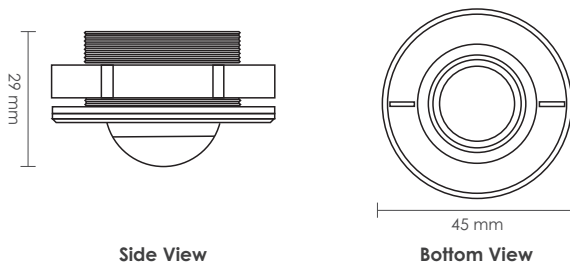
WARRANTY - 5 Years



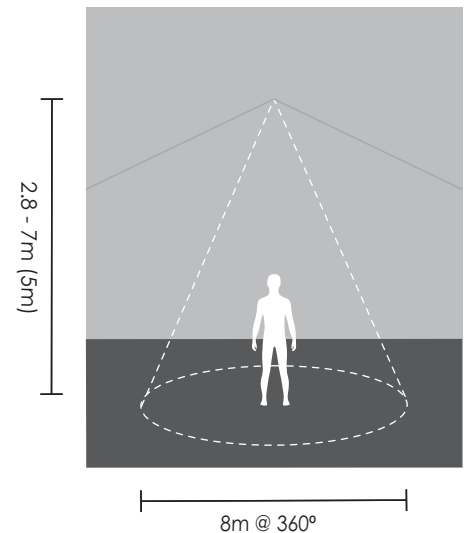
DIMENSIONS IN MM

HOLE CUT OUT

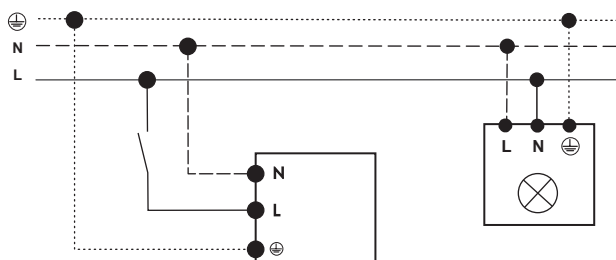
 30mm Ø



DETECTION AREA



WIRING DIAGRAM



IP
65